

For maple sap vacuum production on up to 400 taps



Performance

Flow Rate	per stroke: 0.44 Qt (0.42L)
Max Vacuum	28 in Hg (0.9 bar) ¹ with wet valves
Max Lift	20 ft (6.1 m) ^{1,2}
Max Pressure	11 psi (0.7 bar) ¹
Max Head	25 ft (7.6 m) ¹
Max Service Temp	220°F (104°C)

¹ 72 rpm motor; umbrella valves; sap lines with minimal leaks
² with a check valve

Specifications / Options

Body & Ports *	Natural (Pigment-free) Delrin / White
Clamp Ring	Aluminum Motor Mounting Plate
Valves *	Umbrella (Silicone), Duckbill**
Diaphragm *	Buna-N
Clevis/Button Assembly *	SS Washer + Aluminum Clevis
Motor Ambient Temp	Ambient Temp: 14°F ~ 104°F (-10°C ~ 40°C)
Motor Enclosure	Enclosure provides limited protection against ingress of dust and water spray.

* in contact with fluid
 ** not FDA-approved material

Available Ports

	in	1/2	3/4	1	1-1/8	1-1/4
	cm	1.27	1.91	2.54	2.86	3.18
Hose (Smooth)				S	•	•
NPT Female (Tapped)		•	•			
NPT Male (Threaded)			•	•		
Barbed					•	

S Standard • Optional

- Factory-tested to 22 in Hg vacuum
 - ◇ Can achieve 28 in Hg on sugar-bushes with tight sap lines & wet valves
- Use on up to 400 taps
- No releaser required
 - ◇ Creates vacuum and transfers fluid
 - ◇ Liquid will not damage pump
 - ◇ Can run dry without damage
- Wetted components made of FDA-approved materials
- 1.0 cfm (8.0 gpm)
- Quite-running 115 VAC 72 rpm motor
- Water-resistant motor enclosure
- Wired with on/off switch and 6' power cord
- Accommodates 1/2" – 1-1/4" hose

Valve Options

Duckbill	Good vacuum service. Best for transfer of fluids with some materials in suspension.
Umbrella	Excellent vacuum service. Best for transfer of liquids free of any materials.

115 VAC Motor

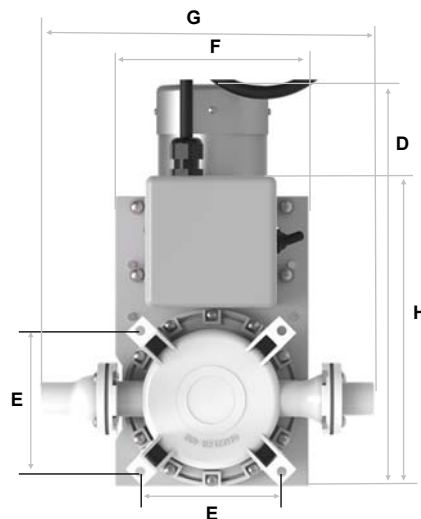
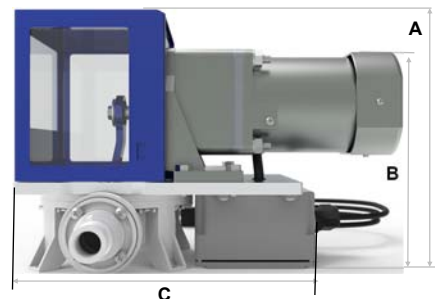
Pump Capacity ³ (cfm)	Motor Speed ³ (Name-plate RPM)	Full Load Torque (in-lbs.)	Input HP	Full Load Amps	Max Vacuum (in of Hg)	Max Head Pressure ⁴ (psi)	Max Head (ft)
1.05	72	111	1/8	1.6	22 ⁵	10	23

³ at 0 lift, 0 head

⁴ Check valve recommended for lifts above 12 ft.

⁵ with dry valves; higher vacuum when valves are wet

Quiet-running, efficient 115 VAC motor available in a range of speeds and torques.



	in	cm
A	8-1/4	21.0
B	7-1/4	18.4
C	9-5/8	24.4
D	12-3/4	32.4
E	4-5/16	11.0
F	6	15.2
G	10-1/4	26.0
H	9-5/8	24.4
Mounting Holes	1/4	0.64
Bolt Circle Diam.	6-1/8	15.6
Weight	16.1 lb	7.3 kg

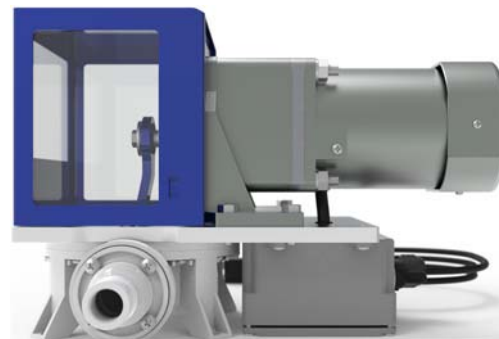
Guzzler® 115 VAC Electric Pump

GE-0401N

Product Model Number Nomenclature Guide

Example: GE-0401N-071-48-5050-BP

- Guzzler Electric Pump
- Model style #0401N: Natural Delrin Body, Opposite Side Ports
- No Variable Speed control option
- White Buna-N Flapper Valves
- Buna-N Diaphragm
- SS Washer & Aluminum Clevis
- Motor Mounting Plate Clamp Ring
- Inlet: 1" Smooth
- Outlet: 1" Smooth
- 115 VAC / 72 RPM / 111 T Motor; water-resistant motor enclosure



Recommended options for use in maple sap collection

Guzzler Product	
Option	Code
Electric Pump	GE

Style (Family)	
Option	Code
Natural Delrin, Opp. Side Ports	0401N

Speed Control	
Option	Code
None	0

Valves	
Option	Code
Flapper (White Buna)	2
Umbrella (Silicone)	7

Diaphragm	
Option	Code
Buna Nitrile	1
Silicone	7

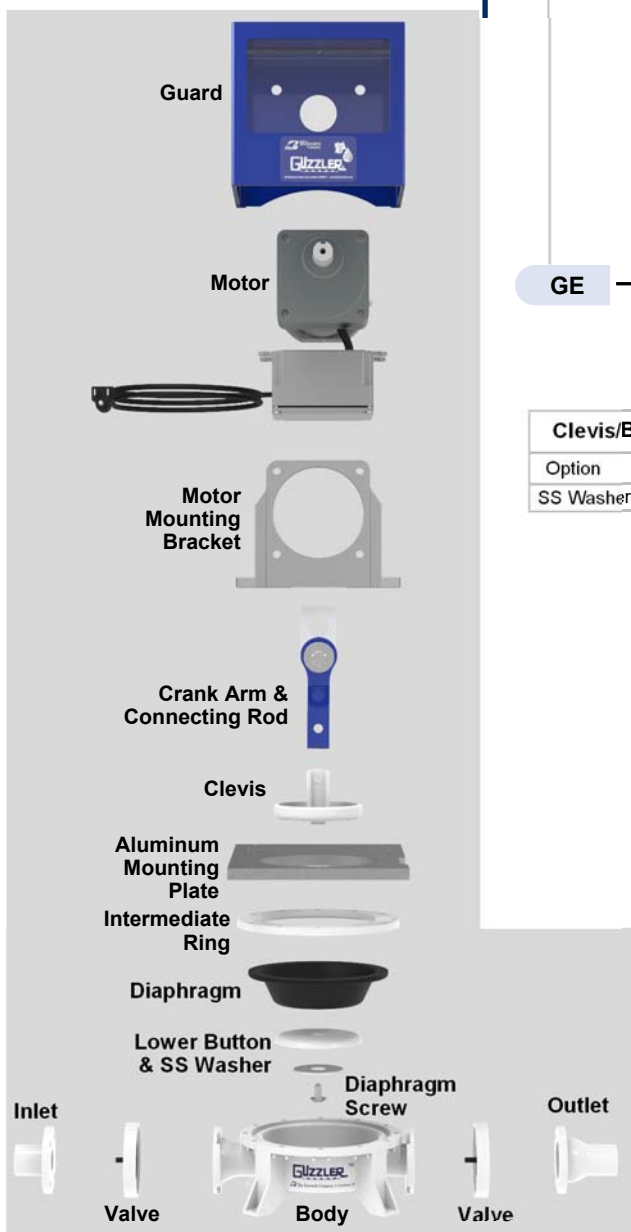
GE - 0401N - 0 7 1 - 4 8 - 50 50 - BP

Clevis/Button Assembly	
Option	Code
SS Washer & Alum Clevis	4

Clamp Ring	
Option	Code
Motor Mounting Plate	8

Hose Connections		
Option	Code	
	Inlet	Outlet
1/2" NPT Tapped	31	31
3/4" NPT Tapped	41	41
3/4" NPT Threaded	42	42
1" Smooth	50	50
1" NPT Threaded	52	52
1-1/8" Smooth	60	60
1-1/8" Barbed	63	63
1-1/4" Smooth	70	70

115 VAC Motors		
Speed (rpm)	Torque (in-lbs)	Code
30	118	BD
60	133	BK
72	111	BP
100	80	BT



930 Waterman Avenue, East Providence RI 02914
 Tel: 401-438-1110 Toll-free: 888-438-1110
 Fax: 401-438-2713 www.thebosworthco.com

Doc M-2-04-GE-0401N-SS-040921